

Badekultur

Für die einen ist es ein Ritual, für die anderen ein reines Selbstverständnis. Die Badekultur in Europa hat sich über Jahrtausende entwickelt. Schon lange geht es um weit mehr, als die Zweckmäßigkeit der Reinigung. Der Wellness- und Spa-Gedanke findet Einzug in jede noch so kleine Wohnung. Dabei ist kein Raum im Haus so komplex wie das Badezimmer. Wasserdampf und extreme Temperaturschwankungen müssen bei der Wahl der Materialien und der Art der Verarbeitung berücksichtigt werden.

Wir möchten Ihnen auf diesem Wege die Welt des Natursteins und einer erlesenen Auswahl an Quarzoberflächen näher bringen. Kein Werkstoff bietet so weitreichende Einsatzmöglichkeiten, wie die Natur selbst. Nicht ohne Grund statten die Top-Hotels weltweit ihre Badezimmer mit Marmor und Granit aus. Großformatige Wandverkleidungen und Abdeckungen eignen sich ideal für den Nassbereich. Wandhohe vollformatige Rückwände haben den Vorteil, dass Schmutz und Feuchtigkeit keinen Halt in Fugen finden.

Nutzen Sie die einzigartige ROSSITTIS Natursteinauswahl sowie die exklusive Caesarstone Produktpalette für die Realisierung Ihres Traum-bades. Wir laden Sie ein, Ihre Materialien persönlich auszuwählen und von der langjährigen Erfahrung der besten Verarbeiter zu profitieren.

Für eine lebenslange Freude an Naturstein- und Quarzoberflächen beachten Sie bitte die Gebrauchs- und Pflegehinweise Ihres Fachbetriebes.



Gerhard Rossittis



Thomas Rossittis



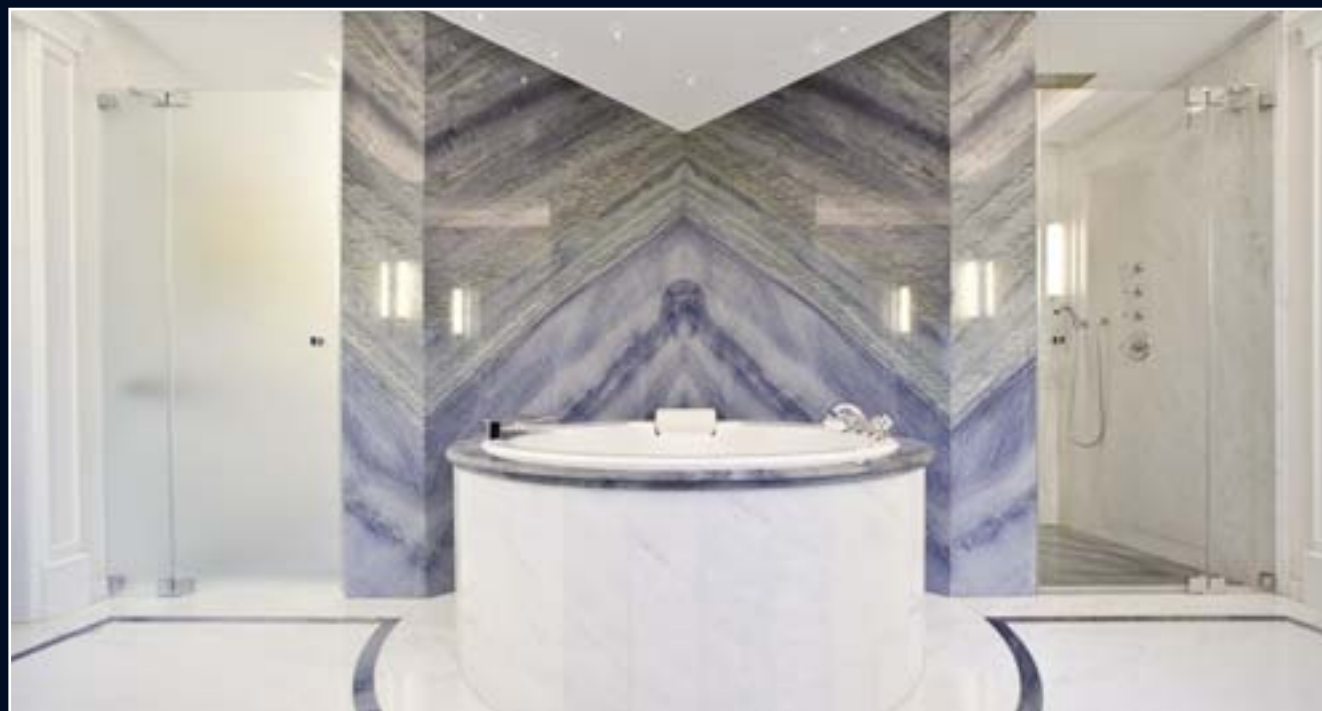
■ Hauptsitz Holzwickede / Dortmund

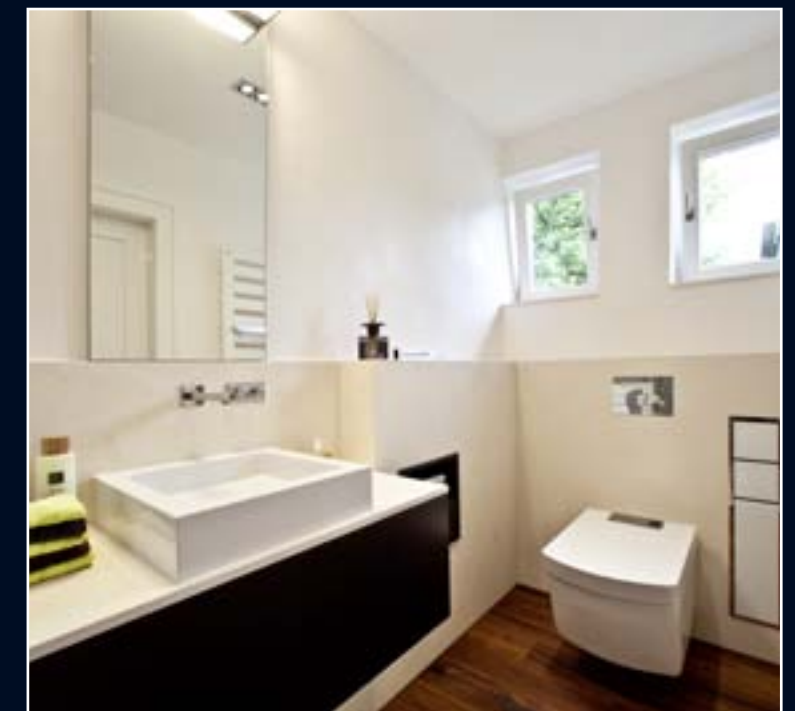


■ Filiale Weyhe / Bremen

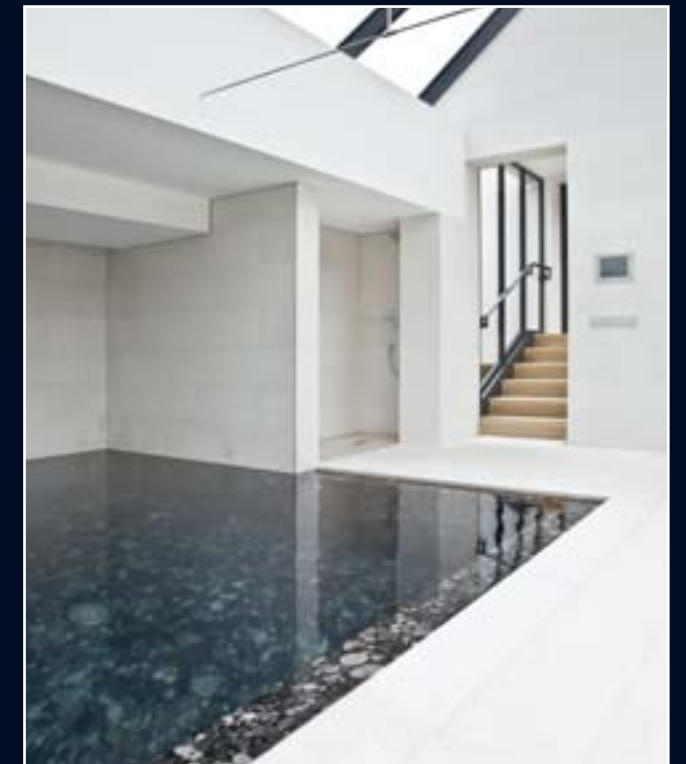


■ Filiale Walldorf / Heidelberg







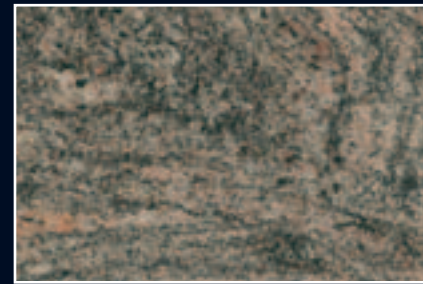


■ Carrara Wave / Anden White

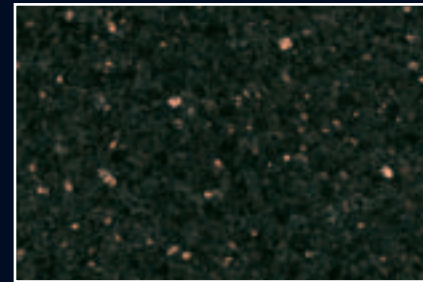
■ Nero Marinace



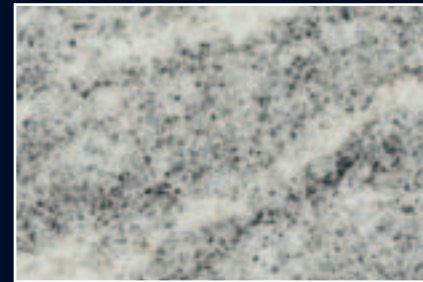
■ Impala Scuro



■ Paradiso Chiaro



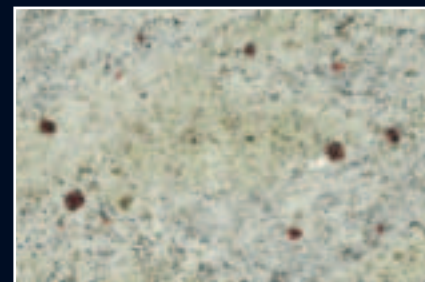
■ Star Galaxy



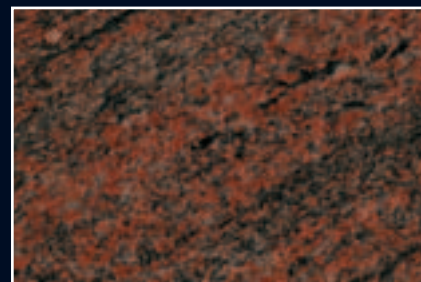
■ Viscont White



■ Cielo Ivory



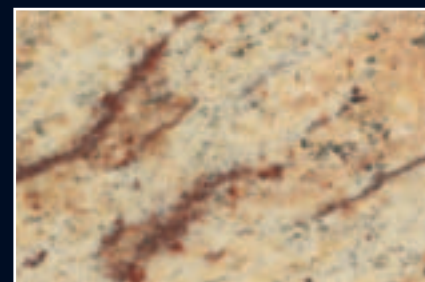
■ Kashmir White



■ Multicolor Rot



■ Astoria Gold



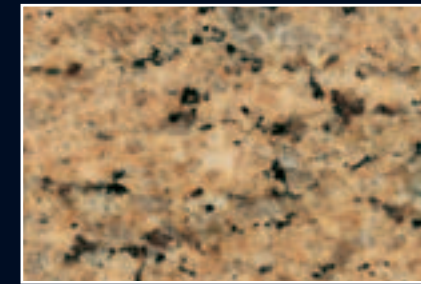
■ Ivory Brown



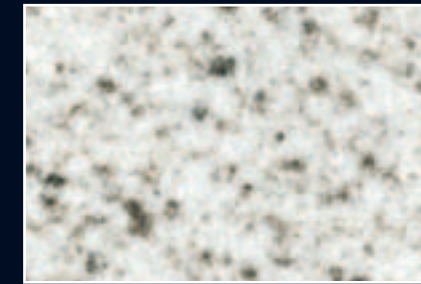
■ Imperial White



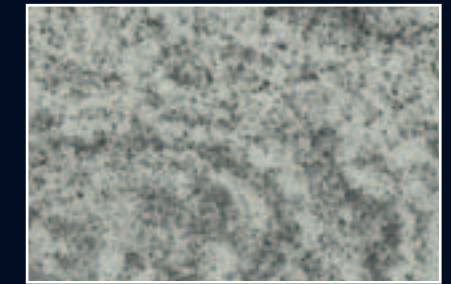
■ Astoria Ivory



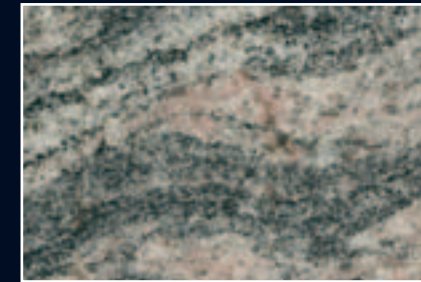
■ Giallo Veneziano



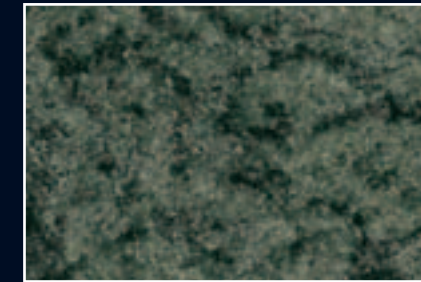
■ Bethel White



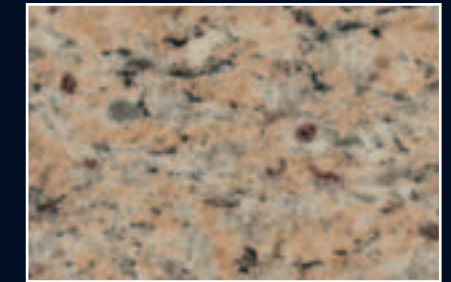
■ Silver Cloud



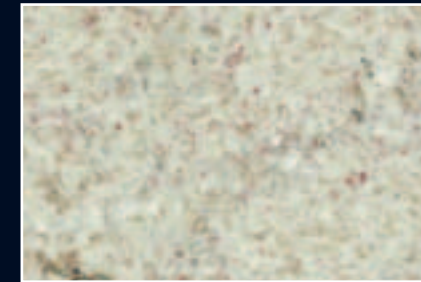
■ Kinawa



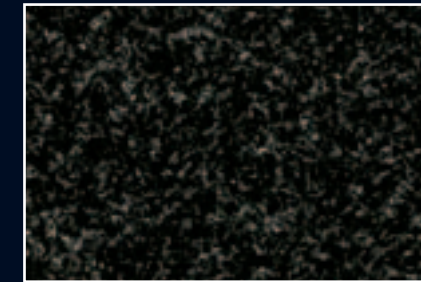
■ Verde Oliva



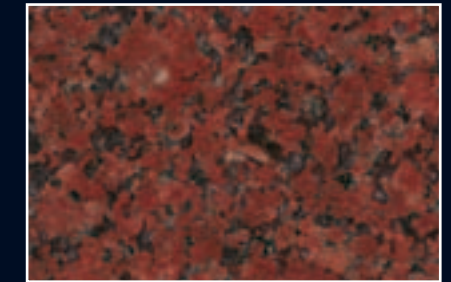
■ Giallo Vitoria



■ Panna Fragola



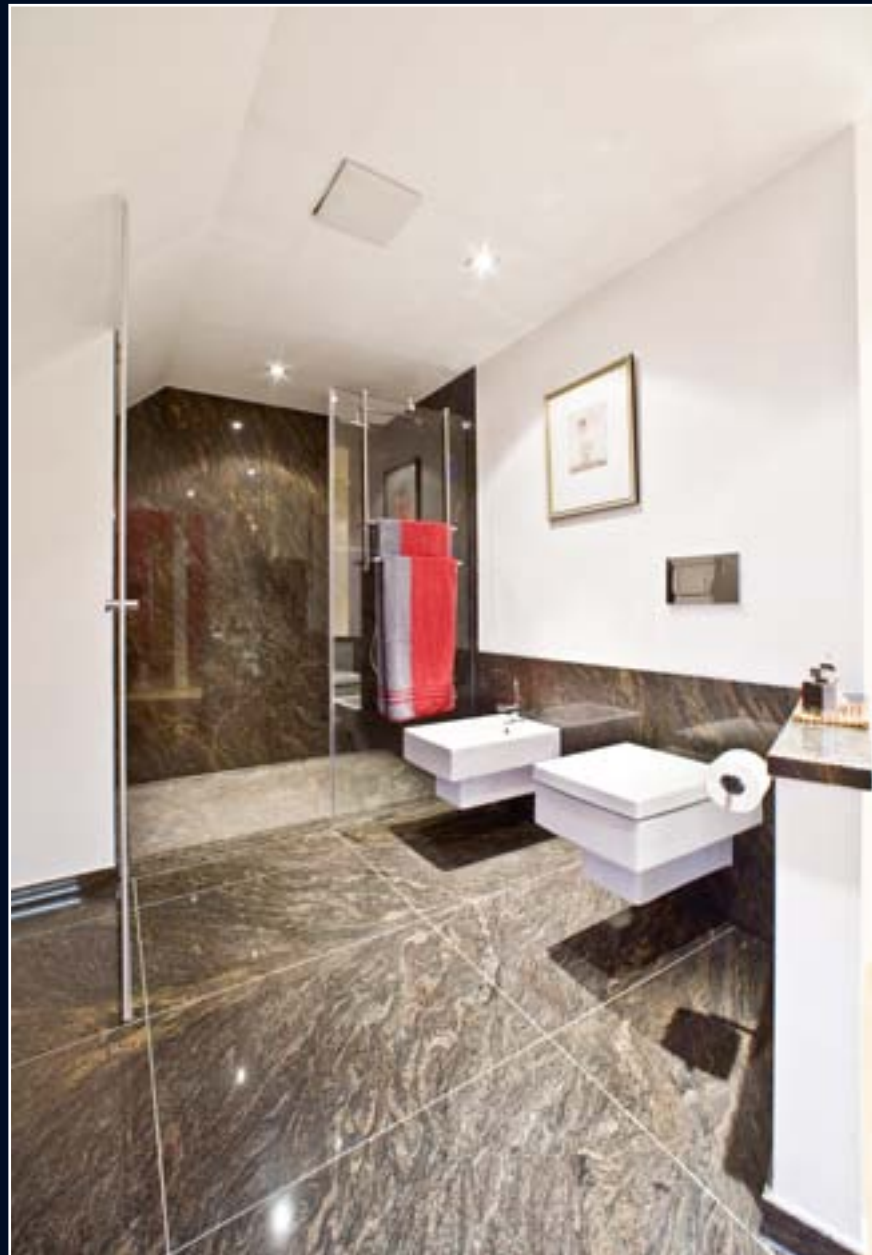
■ Nero Profondo



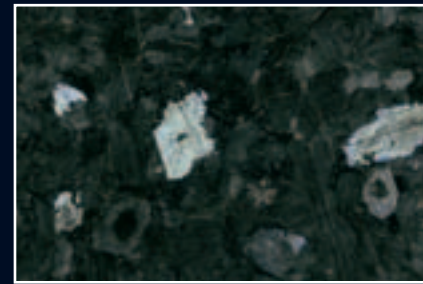
■ New Imperial Red



■ Star Galaxy



■ Paradiso Scuro



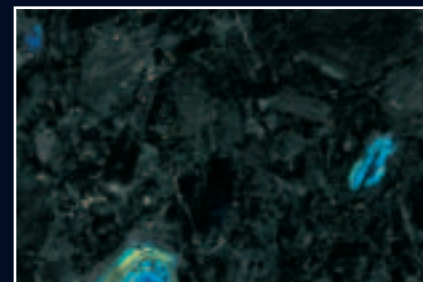
■ Labrador Scuro



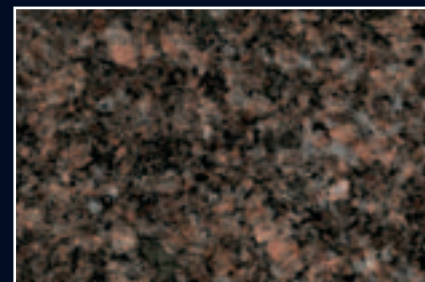
■ Tan Brown



■ Virginia Black



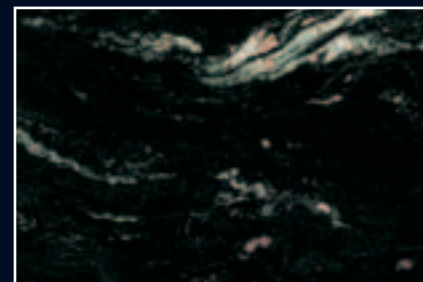
■ Wolga Blue



■ Mahogany India



■ Steel Grey



■ Porto Rosa



■ Devil Black®



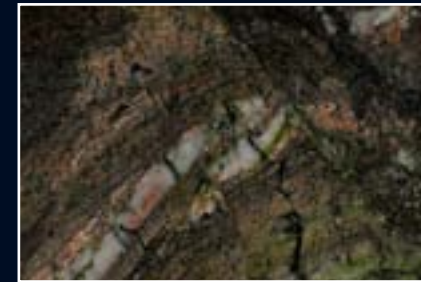
■ Porto Branco



■ Cafe Imperial



■ Marinace Nero



■ Capolavoro



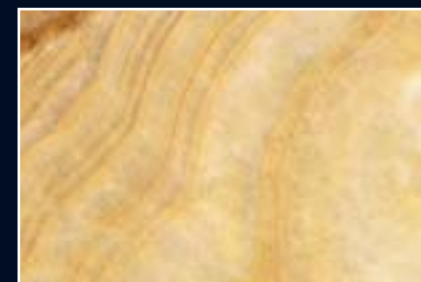
■ Rainforest Brown



■ Sarrancolin



■ Onyx Fuoco



■ Onyx Arco Iris



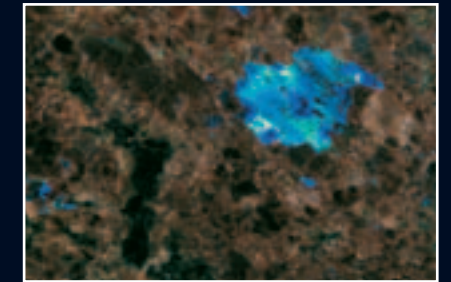
■ Iron Red



■ Vitoria Regia



■ Fusion



■ Labrador Antique



■ Verde Lapponia



■ Belphegor



■ Cleopatra



■ Caesar Brown



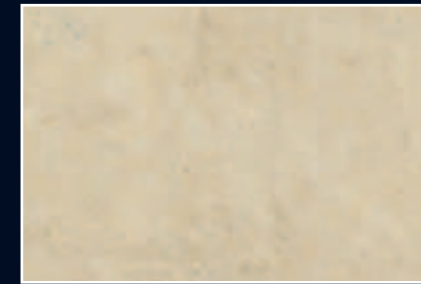
■ Jerusalem Stone



■ Gris Pulpis



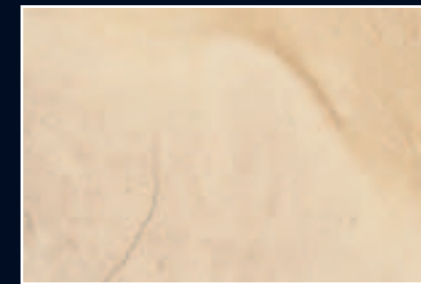
■ Piedra Paloma



■ Thala Beige / Dorsaf



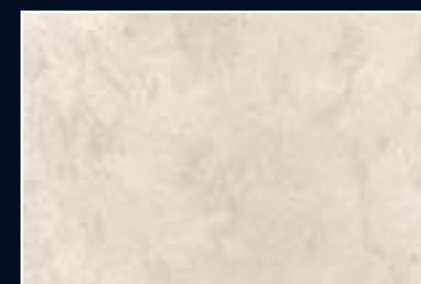
■ Richeval



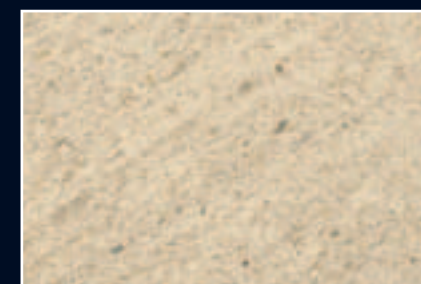
■ Giallo Didone / Samarcanda



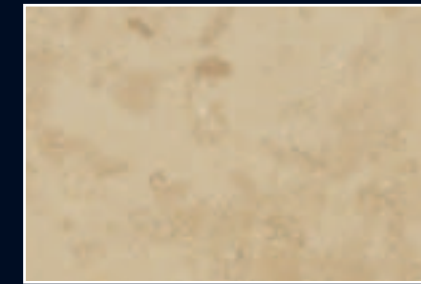
■ San Sebastian



■ Gohare



■ Mocca Creme



■ Jura Gelb



■ Bateig Azul



■ Muschelkalk Blaubank

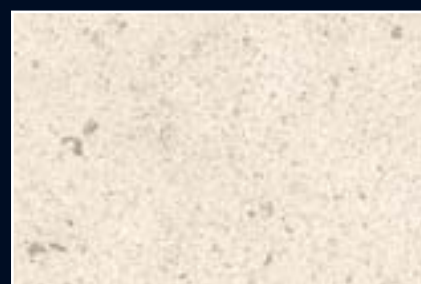


■ Pietra Serena

■ Moleanos



■ Pietra Grigia



■ Moleanos



■ Miros Typ Myrddin



■ Azul Valverde



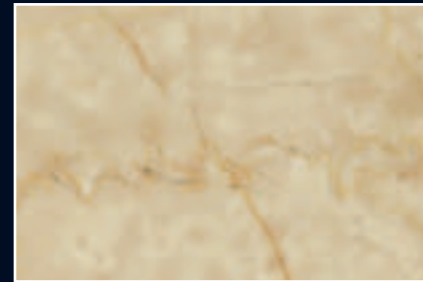
■ Mocca Creme



■ Marrón Emperador



■ Galilee Grey



■ Botticino



■ Eliseo Brey



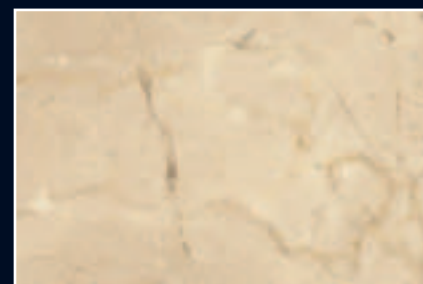
■ Billiemi



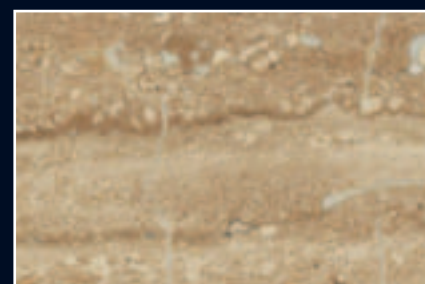
■ Bianco Perlino



■ Rosa Perlino



■ Crema Marfil



■ Daino Reale



■ Rosso Verona



■ Marrón Emperador



■ Travertin Classico



■ Travertin Giallo



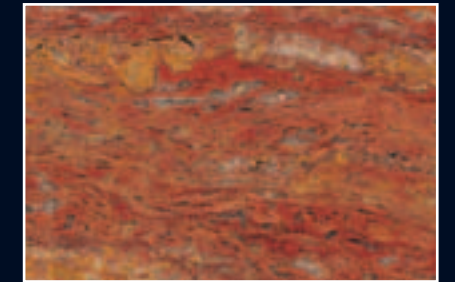
■ Travertin Alabastrino



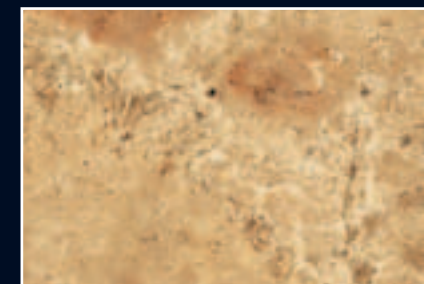
■ Travertin Earl Grey



■ Travertin Beige



■ Travertin Rosso Persia



■ Travertin Scabas



■ Travertin Noce



■ Travertin Zefran



■ Travertin Beige



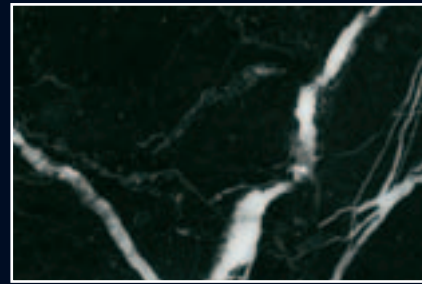
■ Bianco Carrara



■ Statuario Venato



■ Bianco Gioia Venatino



■ Nero Marquina



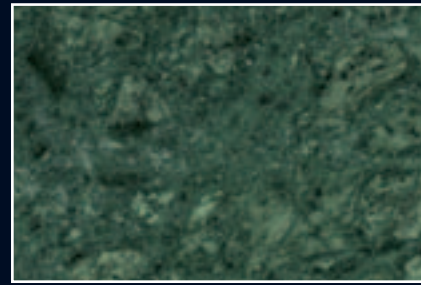
■ Arabescato Cervaiolo



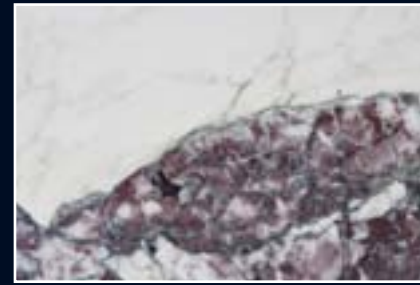
■ Rosso Lepanto



■ Covelano



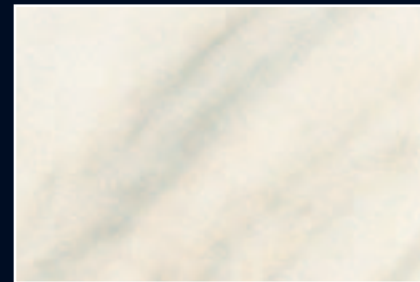
■ Verde Forest



■ Fior di Paonazzo



■ Bianco Gioia Venatino



■ Ruskita



■ Estremoz



■ Estremoz



■ Porto Schiefer



■ Burgundy Schiefer



■ Jaddish Schiefer



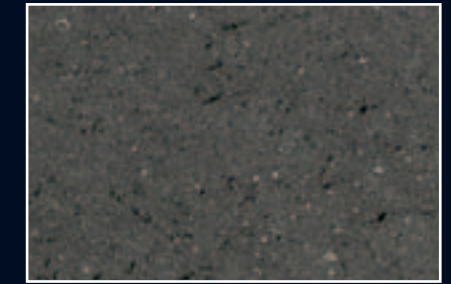
■ Mustang Schiefer



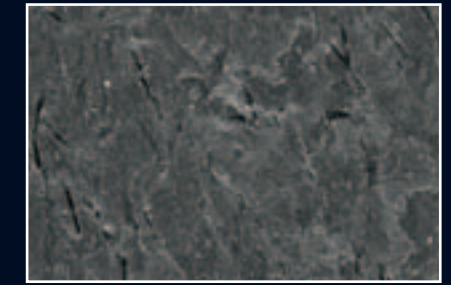
■ Iron Black



■ Anden Phyllit



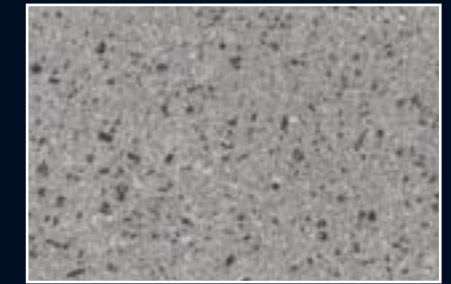
■ Basaltina



■ Otta Phyllit Pillarguri



■ Porto Schiefer



■ Etna Basalt



■ Fevi Stone



■ Azul Imperial



■ Azul Imperial



■ Azul Imperial



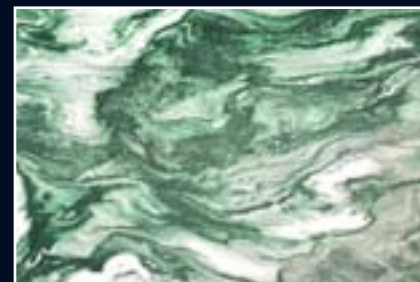
■ Azul Macaubas



■ Quarzite Rossa



■ Pannonia Grün



■ Verde Lapponia



■ Cardoso



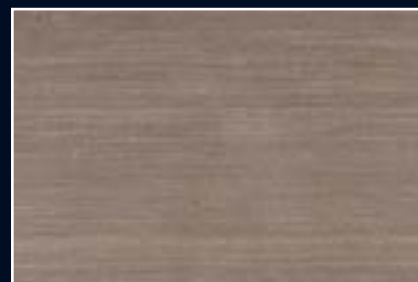
■ Verde Spluga



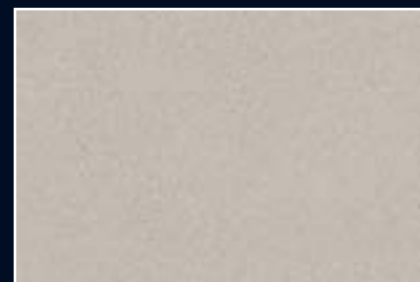
■ Luna Marrón



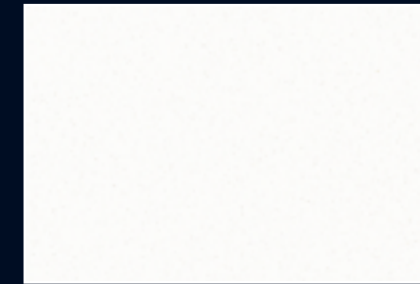
■ Cabernet



■ Wenge



■ Luna Grey



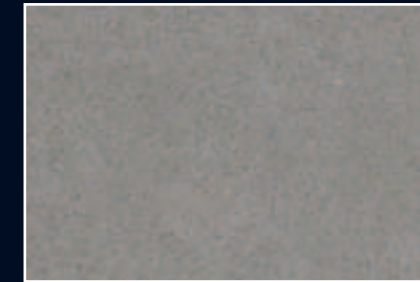
■ Pure White 1141



■ Snow 2141



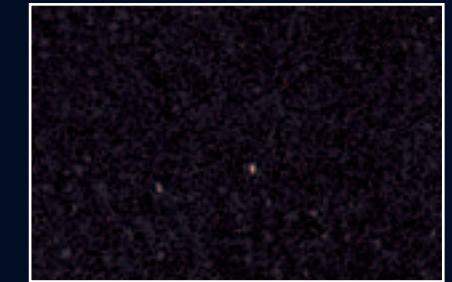
■ Jerusalem Sand 4250



■ Oyster 4030



■ Concrete 2003



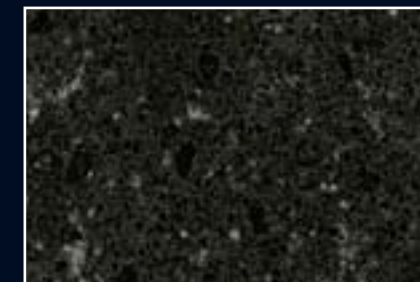
■ Jet Black 3100



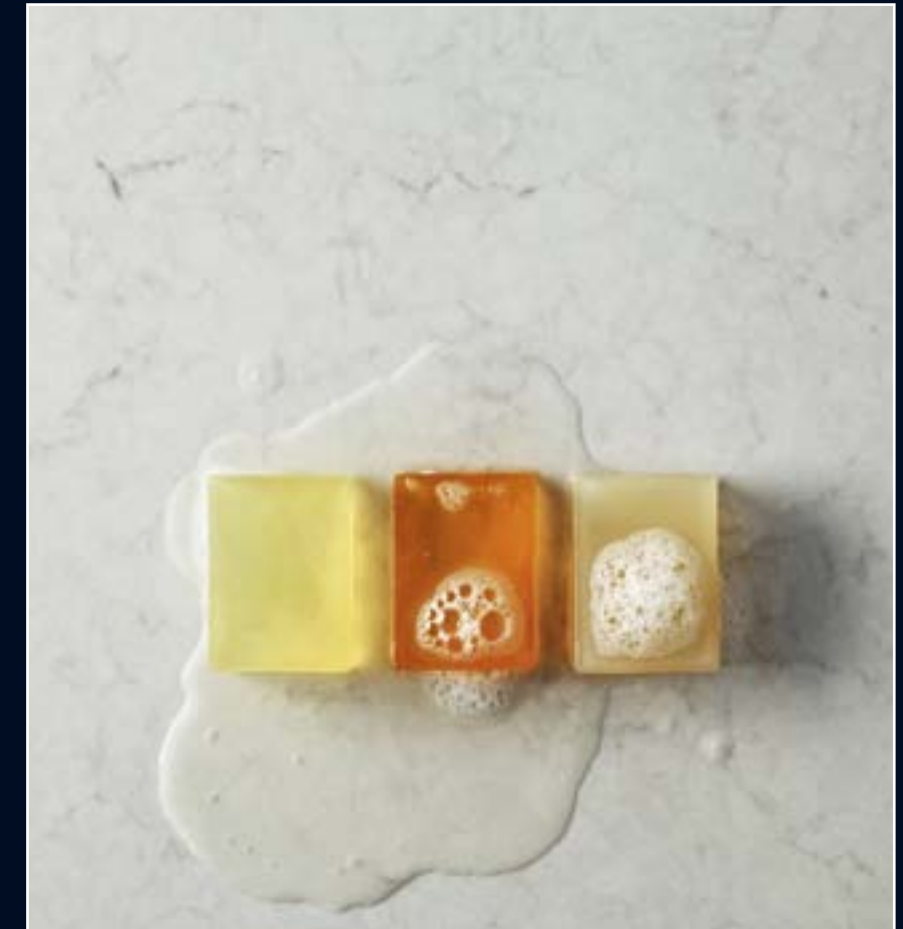
■ Cocoa Fudge 4260



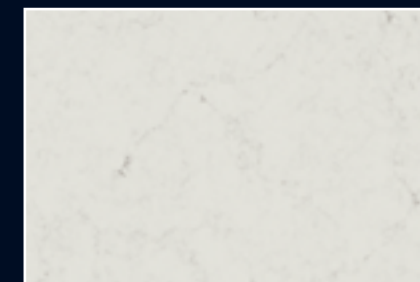
■ Creme Brule 4255



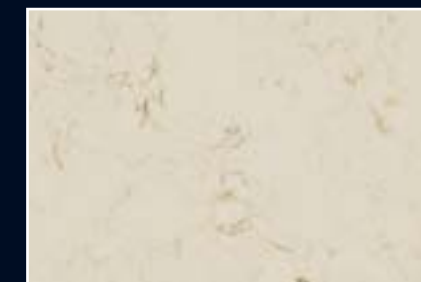
■ Belgian Moon 4100



■ London Grey, 5000



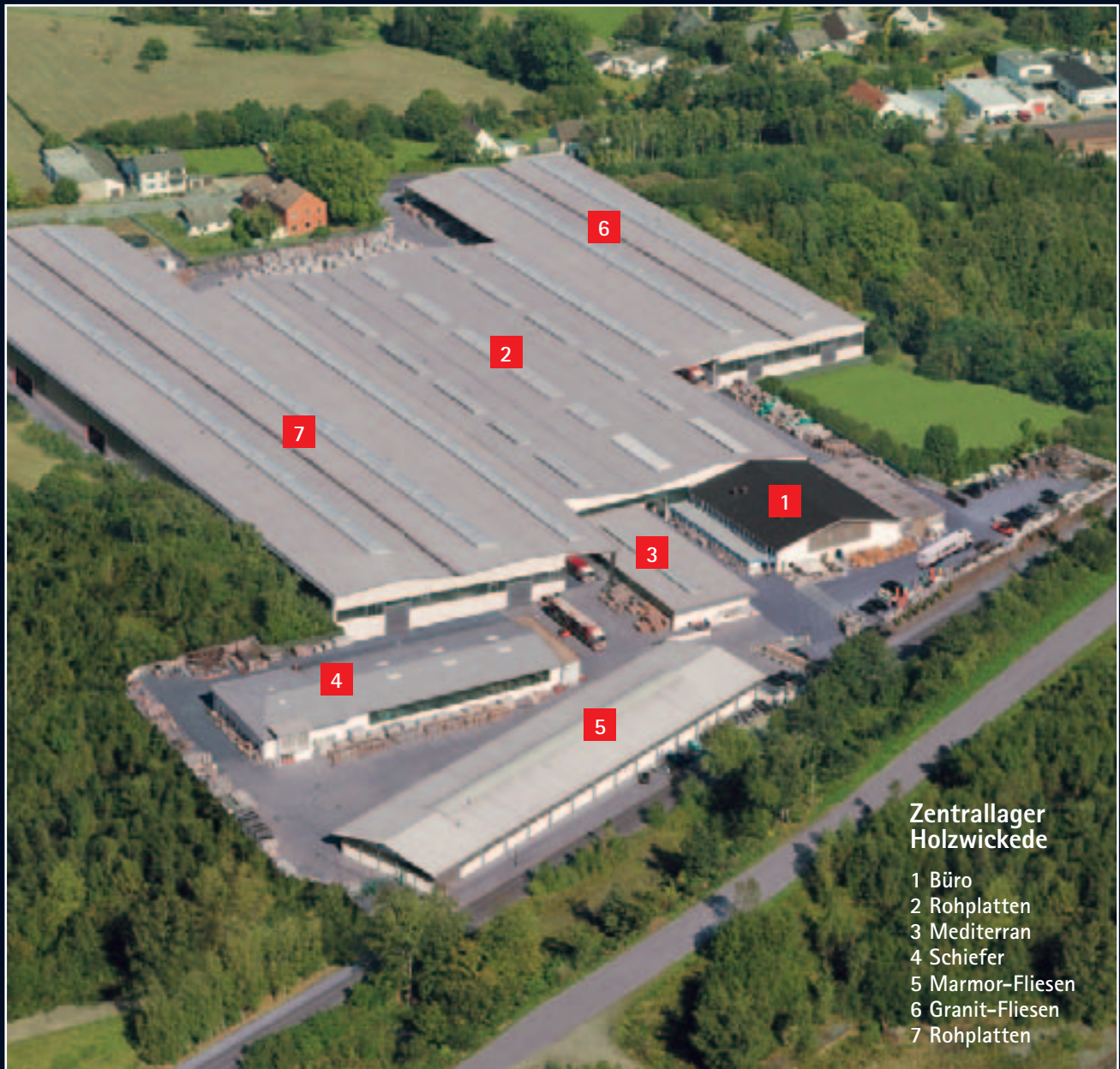
■ London Grey 5000



■ Dreamy Marfil 5220



■ Emperador 5380



Zentrallager Holzwickede

- 1 Büro
- 2 Rohplatten
- 3 Mediterran
- 4 Schiefer
- 5 Marmor-Fliesen
- 6 Granit-Fliesen
- 7 Rohplatten

ROSSITTIS GmbH
Hauptsitz Holzwickede
Stehfenstraße 59-61
D-59439 Holzwickede
Tel.: +49 2301 / 91332-0
Fax: +49 2301 / 91332-32
E-Mail: info@rossittis.de

Filiale Weyhe
Kirchweyher Straße 135
D-28844 Weyhe - Dreye
Tel.: +49 4203 / 7018-0
Fax: +49 4203 / 7018-32
E-Mail: nord@rossittis.de

Filiale Walldorf
Daimlerstraße 61
D-69190 Walldorf
Tel.: +49 6227 / 30992-70
Fax: +49 6227 / 30992-99
E-Mail: sued@rossittis.de

www.rossittis.de

